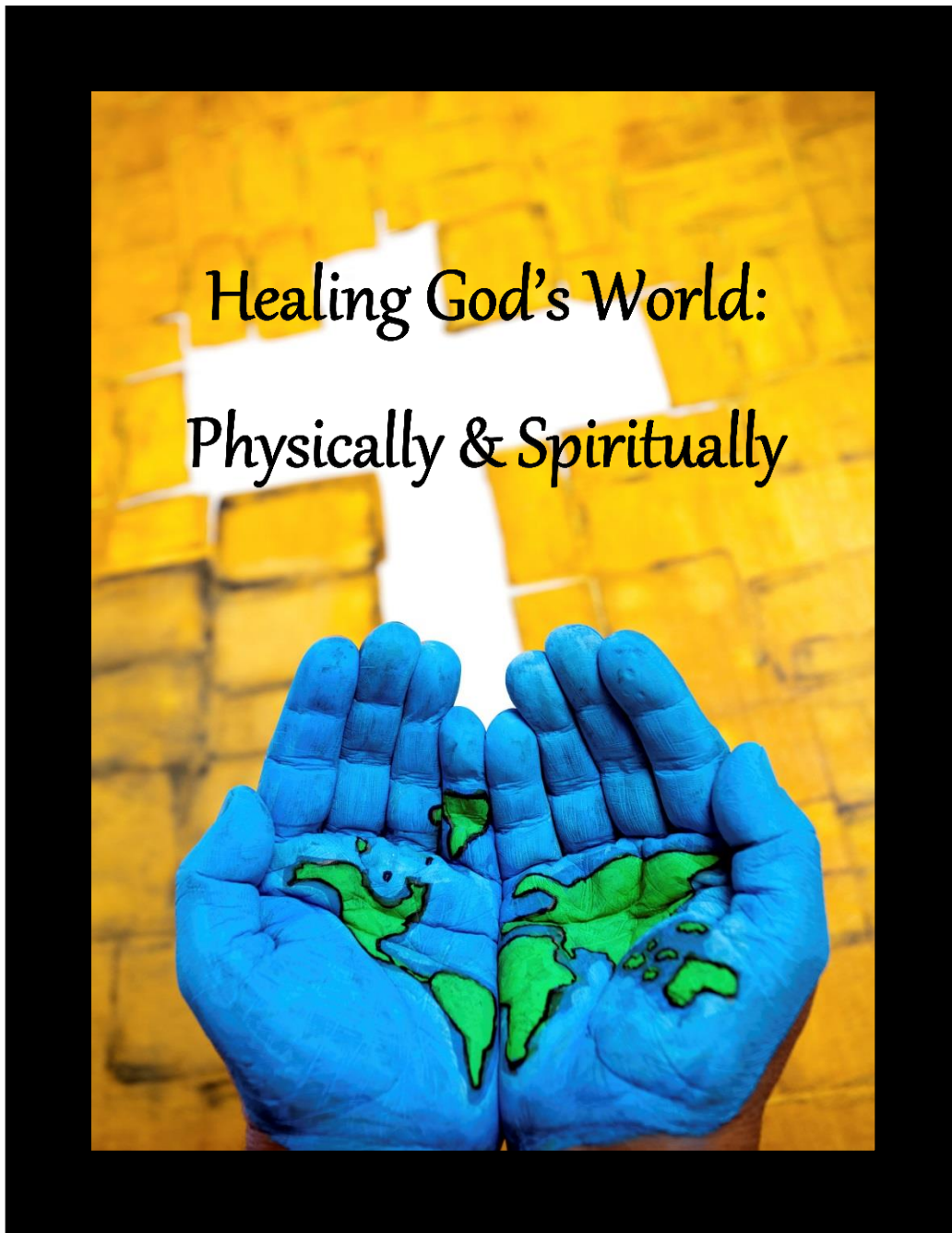


230th

Peninsula-Delaware Annual Conference



June 5 -7, 2014

**University of Maryland Eastern Shore
Princess Anne, Maryland**

TABLE OF CONTENTS

- i. Table of Contents
- ii. 2014 Annual Conference Schedule and Speaker Bios
- iii. Guidelines for Holy Conferencing
- iv. Rules and Guidelines for Clergy and Lay Leadership
- v. Conference Notes

Conference Reports

A.	Committee on Clergy & Lay Leadership	
	(DISTRIBUTED AT CONFERENCE SITE)	
B.	Advocacy Resource Team	B-1
	Committee on Native American Ministries	B-3
	Salisbury Urban Ministries.....	B-7
	Neighborhood House, Inc.....	B-8
	Methodist Action Program	B-10
	Disability Ministries	B-11
C.	Christian Service Team	
	Peter D. Weaver Congo Partnership Team.....	C-1
	Disaster Recovery Team	C-4
	Volunteers in Mission	C-5
	Conference Appeals Coordinator Report	C-10
	Africa University Report.....	C-13
D.	Evangelism and Outreach Committee	D-1
	Health Ministries Team	D-2
E.	Spiritual Formation Team	E-1
	Spiritual Formation Prayer Request Form	E-2
F.	Conference Board of Higher Education and Campus Ministry	F-1
	Board of Ordained Ministry.....	F-2
	Wesley College Chaplain's Report	F-3
	Care Team	F-5
	Wesley Foundation: Delaware State University	F-5
	Wesley Foundation: Salisbury University.....	F-7
	Wesley Foundation: University of Maryland Eastern Shore	F-10
	Wesley Foundation: University of Delaware	F-11
G.	Administrative Ministries	
	Board of Pensions	G-1
	Commission on Equitable Compensation	G-7
	2013 Equitable Compensation Support	G-8
	Conference Board of Trustees.....	G-9
	Conference Council on Finance and Administration	G-12
	The Philadelphia Area Committee on Episcopacy	G-14

i.

H.	Vision Team	H-1
	Board of Lay Ministries	H-2
	Young People's Ministries	H-3
	United Methodist Women	H-6
	Communications Commission	H-7
	Communications Office	H-8
	Congregational Development Corporation	H-9
	Strengthening the Black Church	H-10
	Cross Racial Cross Cultural Report	H-11
	Pecometh Camping & Retreat Ministries.....	H-12
I.	Commission on Archives and History	I-1
J.	Board of Childcare	J-1
R.	Resolutions	
	Organizational and Procedural Motion.....	R-1
	Conference Rules of Order	R-1a
	Consent Calendar	R-2
	Higher Education Day Scholarships	R-3
	Joint Committee on Clergy Medical Leave	R-4
	Mental Illness and Clergy Disability Benefits.....	R-5
	Amend Conference Advance Specials for 2013-2016	R-6
	2015 Covenant Funding Plan	R-7
	2014 Covenant Funding Plan Modification	R-8
	Technology Use and Privacy Policies	R-9
	Technology Use Policy for United Methodist Church	R-9a
	Technology Use and Privacy Policies.....	R-9b
	Support Peace with Justice in the Middle East.....	R-10
	Endorse Task Force on Senior Adult Ministries	R-11
	Mobilize Faith Communities for Poverty Reduction.....	R-12
	Inclusivity and Tolerance on the Issue of Human Sexuality	R-14
	Year-Long Commemoration of our Journey toward Wholeness to Mark	R-15
	Union Wesley Camp Resolution.....	R-16
T.	Conference Treasurer's Report	T-1
X.	Lay and Reserve Member List	X-1
X.	Lay and Reserve Member Correction Form.....	X-2
X.	2014 Report of Students Attending Colleges or Universities	X-3
X.	Summer Worship Schedule (Barratt's Chapel).....	X-4
Z.	New Lay Members Orientation	Z-1
Z.	Laity Session 2014	Z-2
Z.	JuneTeenth Church BBQ.....	Z-3
Z.	Director's Leadership Week	Z-4
Z.	MISSION-u.....	Z-5